

EMS ESCAPE™ LIGHTBAR



Front Lightbar



Rear Lightbar

EMS Escape™ lightbars are perfect for mounting to the front and rear of ambulances and rescue vehicles.

Groundbreaking, innovative, and novel in design, the EMS Escape™ lightbar and Quick Track™ mounting system provide impressive warning technology at an economical price. Completely surface mount in design, the EMS Escape does not require body panel cutouts and is very easy to install.

The internal components of the lightbar provide additional value and savings by utilizing the same assemblies and components found in Federal Signal's perimeter warning and scene lights. This helps to reduce the number of spare parts required on a vehicle, which in turn helps to reduce the inventory of fleet maintenance facilities.

QUICK TRACK™ MOUNTING SYSTEM

Available for purchase with any EMS Escape lightbar is the Quick Track mounting system. The Quick Track mounting system consists of an aluminum extruded mounting plate that is surface mounted to the vehicle body before installation of the EMS Escape lightbar. The lightbar then mounts to the extrusion in four

easy steps (see below).

Using the Quick Track mounting plate allows the user to take the lightbar off the vehicle at any time without having to remove interior vehicle compartments.

Vehicle manufacturers who standardize on the Quick Track system will find increased flexibility when changes need to be made to the lightbar before installation as well as fewer delays in production.

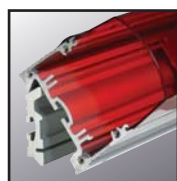
CUSTOMIZE THE EMS ESCAPE

Each EMS Escape can be specified to meet individual department needs. Choose from LED, strobe, and halogen base models designed to meet GSA-KKK or NFPA requirements. Then specify any additional lightbar options, choose the dome colors, and customize the lightbar length if necessary (contact factory for details).

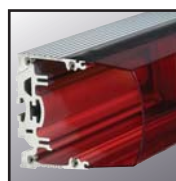
EMS Escape options available include LEDs, strobes, halogen flashers, rotators, scene lights, alley lights, and the 3M™ Opticom™.



Step 1. Mount Quick Track mounting plate to vehicle body.



Step 2. Hook the top edge of the EMS Escape lightbar extrusion to the mounting plate.



Step 3. Allow the bottom of the lightbar to rest flush against the mounting plate.



Step 4. Secure the EMS Escape to Quick Track mounting plate with supplied mounting hardware.

QUICK REFERENCE

FEATURES

- Innovative Quick Track™ mounting system eases installation and allows for "off-the-vehicle" maintenance.
- Surface mount lightbar ideal for ambulances and rescue vehicles.
- GSA-KKK compliant models available in halogen, strobe, and LED configurations.
- Custom lengths are available to fit any vehicle size or application.
- Adjustable scene lights and alley lights allow user to direct light where it is needed.

APPLICATIONS

- Ambulances
- Rescue apparatus

APPROVALS

- GSA-KKK, Rev. E
- NFPA 1901
- SAE J2498

REPLACEMENT PARTS

Bulb, rotator	Z8107141A
Bulb, alley light	Z8107231-03
Bulb, scene light	Z8575107A
Bulb, halogen flasher	Z8107152A
Strobe/reflector ass'y	Z8575189A

RELATED PRODUCTS

MODLED™ LED Warning Lights
Bulletin #4301

FireRay™ Warning Lights
Bulletin #4106

GHSCENE Area Light
Bulletin #4107

Cuda TriOptic™ LED SignalMaster™
Bulletin #4185

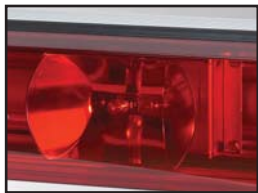
MODLED™ LED WARNING LIGHTS

Each MODLED™ LED module offers the long life and low current draw available with every LED product. An ultrasonically welded, plastic housing protects internal components from damage. Each module features optically engineered prescription lenses to direct warning light to the critical off-axis warning areas. MODLED warning modules are available in amber, blue, green, red, and white and come with a five year warranty.



FIRERAY™ HALOGEN REFLECTOR

Specifically designed to exceed demanding industry lighting standards, the FireRay™ halogen reflector assembly is an ideal component for every EMS Escape lightbar. The contour of the halogen reflector assembly helps to disperse warning light over a wide area to maximize warning for optimum performance. The halogen FireRay option can be specified as supplemental warning or to create a lightbar compliant with the GSA-KKK standard.



FIRERAY STROBE REFLECTOR

Featuring the same innovative design as the FireRay strobe perimeter light, the EMS Escape strobe option features an optically engineered strobe/reflector assembly that provides unmatched warning to critical off-axis areas. Each strobe tube is filled with powerful Xenon gas. When the power supply provides a charge to the assembly, the Xenon gas in the tube expands quickly to produce an intense flash of light. The light output and optically designed reflector of this strobe assembly work in conjunction to provide unsurpassed warning light performance.



SCENE LIGHT

Each scene light utilizes (2) 20-watt halogen lamps that use bulbs commercially available at many local hardware and lighting suppliers. These fixtures can be adjusted both vertically and horizontally to direct light wherever it is needed. When the lamps have been adjusted to the desired position, simply tighten one screw to lock the assemblies in place.



ALLEY LIGHT

The EMS Escape alley light mounts at the end of each lightbar and illuminates the side areas of the vehicle. This assembly is vertically adjustable so the user can direct the light at any angle. This option can be used in conjunction with normal scene lights for maximum illumination or it can be wired to turn on when the doors of the vehicle open to provide ground lighting for paramedics and EMTs working around the vehicle.



ROTATOR

Engineered especially for the EMS Escape, the rotator option is available for increased attention-getting warning power. Available with various mirror assemblies, the EMS Escape rotator is available in three speeds: 95, 120, or 175 flashes per minutes (FPM). Use the EMS Escape rotator in conjunction with other lightbar options for maximum awareness and to meet industry lighting requirements. Each EMS Escape rotator assembly comes with a five year warranty.



FEWER REPLACEMENT PARTS

Keeping in mind that spare part inventories take up space and cost money, Federal Signal continues to develop products and lighting systems to minimize maintenance time and reduce spare part inventories for fleet maintenance facilities. The EMS Escape lightbar continues this tradition by incorporating parts already used in other Federal Signal lighting products.

The halogen flasher assembly is the same assembly used in the halogen FireRay perimeter light (GH5). The strobe/reflector assembly is the same component found in each FireRay strobe (GS5). Furthermore, the scene light assembly is the same assembly found in the GHSCENE area light.

This commonality of components is the key to reducing the space and money required to keep lighting replacement parts in stock. For example, an EMS agency could specify an ambulance with Escape strobe lightbars to the front and rear of the vehicle with FireRay strobe lights on the side and in the front grille area. This customer would then only have to stock the strobe/reflector assembly - one replacement part - to change out strobe lights. This eliminates the need to carry different strobe tubes and various reflector assemblies found in other light heads and lightbars.

LIGHTBAR DIAGRAMS



EH8201 / EH8601 / EH8801 (Front Lightbars)



EH8202 / EH8602 / EH8802 (Rear Lightbars)



ES8201 / ES8601 / ES8801 (Front Lightbars)



ES8202 / ES8602 / ES8802 (Rear Lightbars)



EL8201 / EL8601 / EL8801 (Front Lightbars)



EL8202 / EL8602 / EL8802 (Rear Lightbars)

LEGEND

LED	ModLED LED warning light	HF	Halogen flashing light	SCENE	Adjustable scene light
ROT	175 FPM rotator	STR	Strobe light		V-mirror assembly

OPTION SPECIFICATIONS

Model	Description	Lamp Type	Current Draw
EMSHAL-S	Halogen flasher	H3	4.2 amps
EMSGS51-S	Strobe reflector assembly	Strobe tube	2.3 amps*
EMSMOD-S	ModLED LED module	N/A	0.3 amps
EMSROT-S	Rotator, 95 FPM	795X	4.3 amps
EMSMED-S	Rotator, 120 FPM	795X	4.3 amps
EMFAST-S	Rotator, 175 FPM	795X	4.3 amps
EMSCENE-S	Scene light	MR-16	3.5 amps
EMSAL-S	Alley light assembly	MR-16	3.0 amps
3M792H	3M Opticom Emitter	Strobe Tube	5.0 amps

* Amp draws calculated when using with SPS8 power supply.

How To ORDER

1. Specify a model.*

82" Models

EH8201	82", front bar, (3) halogen flashers, (4) rotators
EH8202	82", rear bar, (3) halogen flashers, (4) rotators, (2) scene lights
ES8201	82", front bar, (3) strobes, (4) rotators
ES8202	82", rear bar, (3) strobes, (4) rotators, (2) scene lights
EL8201	82", front bar, (8) red LED modules, (1) halogen flasher
EL8202	82", rear bar, (8) red LED modules, (1) halogen flasher, (2) scene lights

86" Models

EH8601	86", front bar, (3) halogen flashers, (4) rotators
EH8602	86", rear bar, (3) halogen flashers, (4) rotators, (2) scene lights
ES8601	86", front bar, (3) strobes, (4) rotators
ES8602	86", rear bar, (3) strobes, (4) rotators, (2) scene lights
EL8601	86", front bar, (8) red LED modules, (1) halogen flasher
EL8602	86", rear bar, (8) red LED modules, (1) halogen flasher, (2) scene lights

88" Models

EH8801	88", front bar, (3) halogen flashers, (4) rotators
EH8802	88", rear bar, (3) halogen flashers, (4) rotators, (2) scene lights
ES8801	88", front bar, (3) strobes, (4) rotators
ES8802	88", rear bar, (3) strobes, (4) rotators, (2) scene lights
EL8801	88", front bar, (8) red LED modules, (1) halogen flasher
EL8802	88", rear bar, (8) red LED modules, (1) halogen flasher, (2) scene lights

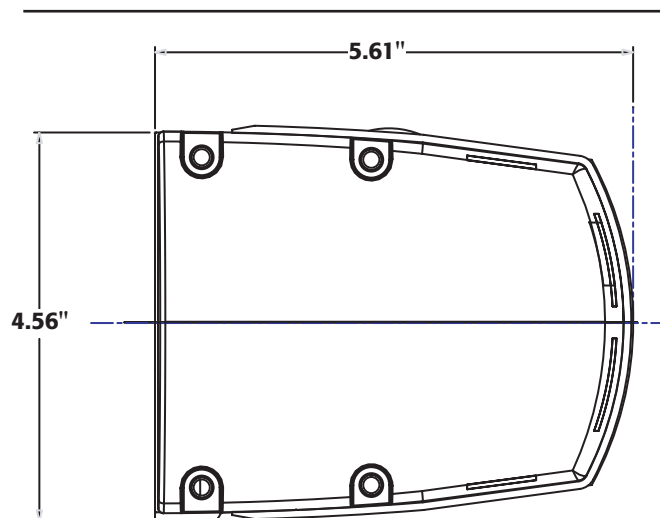
2. Order Quick Track mounting plate.

QT8292 Mounting plate for 82" - 92" lightbars

3. Specify dome colors: amber, blue, clear, green, or red.

* For custom configurations or lightbar lengths, contact the factory or your Federal Signal sales representative.

DIMENSIONS



An ISO 9001 Certified Supplier
FEDERAL SIGNAL CORPORATION
Emergency Products

2645 Federal Signal Drive, University Park, IL 60466-3195
Tel.: (800) 264-3578 • Fax: (800) 682-8022
Web: www.fedsig.com

Escape, FireRay, Cuda TriOptic, SignalMaster, Quick Track, and ModLED are trademarks of Federal Signal Corporation.

3M Opticom is a trademark of 3M Corp.

©2003 Federal Signal Corporation