

## MINI-JET™ LIGHTBARS



Available in halogen, strobe, and LED, Mini-Jet™ lightbars are exceptionally effective and aerodynamic.

Federal Signal's family of Mini-Jet™ lightbars are available in halogen, strobe, and LED versions to fit any application. Each 21" Mini-Jet is extremely low profile and aerodynamic in design.

### HALOGEN MINI-JET

Utilizing intense rotator assemblies, model JM features two standard speed rotators and a diamond mirror while model JM-FAST features two standard speed and one fast rotator with two diagonal mirrors. These rotating light assemblies work in conjunction with the mirrors to provide powerful, attention-getting blasts of light power for maximum warning.

### MINI-JETSTROBE™

Each Mini-JetStrobe™ model utilizes quad flash power supplies. This multiple flash capability for each strobe head delivers more activity and minimal "dark time" between flashes. All models feature front or rear light cutoff, low power mode, and an action flash that provides (125) double flashes per minute.

### MINI-JET LED

Combining the significant benefits of LED technology into the low profile Jet housing is perfect for applications where

both current draw and aesthetics are concerns. The Mini-Jet LED incorporates MODLED™ LED warning light modules. These modules provide the benefits of low current draw and long life while drawing less than 0.5 amps per module. These warning light modules are available in amber, blue, green, red, and white.

Additionally, each Mini-Jet LED features the recently designed Intelli-Flash™ flasher. With (8) flash patterns, the Intelli-Flash allows the user to select the best overall flash pattern for the application.

### COLOR CUSTOMIZATION

For halogen and strobe versions, solid color domes are conveniently available in amber, blue, clear, green, and red. With a clear dome, colored lens inserts slide into the dome to provide the desired color combinations. There are also Fresnel lenses to insert over the front of each strobe head to maximize light output.

For Mini-Jet LED lightbars, specify clear domes, customize color combinations, and choose the location of each LED module. Each MODLED module comes with color LEDs and colored lenses.

## QUICK REFERENCE

### FEATURES

- Low profile, aerodynamic mini-lightbar.
- Available in halogen, strobe, and LED.
- Easy color customization.
- Durable and dependable.
- Permanent mount or magnetic mount kits available.

### APPLICATIONS

- Motorcycles
- Volunteer vehicles
- Utility vehicles
- Parking enforcement
- Command vehicles

### REPLACEMENT PARTS

Dome, clear	Z8552D054C
Dome, red	Z8552D054C-01
Dome, amber	Z8552D054C-02
Dome, blue	Z8552D054C-03
Strobe head	Z8552443B-01
Rotator ass'y	Z8552308A
95 FPM	
Rotator ass'y	Z8552308A-01
175 FPM	

### RELATED PRODUCTS

HighLighter™ Mini-Lightbar  
Bulletin #4119

Turbo Beam™ Mini-Lightbar  
Bulletin #3152

FS2000™ Series Mini-Lightbar  
Bulletin #3165

Switch Controls  
Bulletin #5108

PA300 Series Electronic Siren  
Bulletin #5102

## HOW TO ORDER

### 1. Specify a model.

<b>JM</b>	21", (2) 95 FPM rotators and (1) diamond mirror
<b>JM-FAST</b>	21", (2) 95 FPM rotators and (1) 175 FPM rotator
<b>SJL2110P</b>	21", (4) strobe heads
<b>SJL2111P</b>	21", (4) strobe heads, (2) alley lights, (1) scene light
<b>SJL2120P</b>	21", (6) strobe heads
<b>JLL2101</b>	21", (6) red LED modules, (8) flash patterns
<b>JLL2199</b>	21", (10) red LED modules, (8) flash patterns

### 2. Specify dome color: red, blue, amber, or green. Or specify clear domes and order colored inserts. See chart below for inserts required for desired model. (For LED lightbars, specify clear domes.)

<b>JSDI</b>	Standard insert
<b>JSFI</b>	Fresnel insert (required for each forward or rear facing strobe)
<b>JSFEI</b>	Fresnel endcap (required for each side facing strobe)
<b>JSHI</b>	Half insert
<b>JSCI</b>	Center insert
<b>JSIEC</b>	Endcap for models without alley lights
<b>JSIECA</b>	Endcap for models with alley lights

### 3. Order mount kit (not included).

<b>JMMK</b>	Magnetic mount kit
<b>JMPK</b>	Permanent mount kit

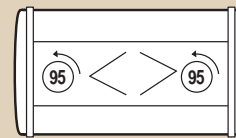
INSERTS FOR EACH LIGHTBAR			
SJL2110	SJL2111P	JM/JM-FAST	SJL2120
(6) JSHI	(6) JSHI	(8) JSDI	(6) JSHI
(4) JSFI	(4) JSFI	(2) JSIEC	(4) JSFI
(2) JSCI	(2) JSCI		(2) JSCI
(2) JSIEC	(2) JSIECA		(2) JSFEI

DIMENSIONS						
Model	Length in. cm.	Width in. cm.	Height in. cm.	Ship. Weight* lbs. kg.		
All	21.0 53.3	11.2 28.4	4.7 11.9	16.0	7.2	

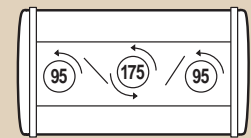
\*SJL2120 models ship at 18.0 lbs (8.1 kg).

An ISO 9001 Certified Supplier  
**FEDERAL SIGNAL CORPORATION**  
 Emergency Products  
 2645 Federal Signal Drive, University Park, IL 60466-3195  
 Tel.: (800) 264-3578 • Fax: (800) 682-8022  
 Web: www.fedsig.com

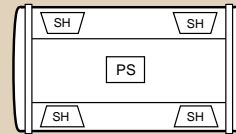
## LIGHTBAR DIAGRAMS



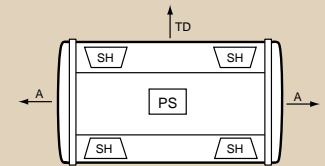
**JM**



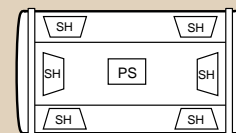
**JM-FAST**



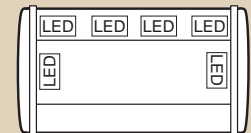
**SJL2110P**



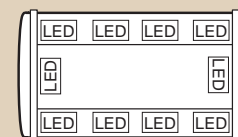
**SJL2111P**



**SJL2120P**



**JLL2101**



**JLL2199**

### LEGEND

	ModLED light module, red
	Strobe head
	Alley lights
	Scene light
	Power supply
	95 FPM rotator
	175 FPM rotator
	Diagonal mirror
	V-Mirror

Mini-Jet, HighLighter, FS2000, ModLED, Intelli-Flash, Turbo Beam, and Mini-JetStrobe are trademarks of Federal Signal Corporation.

©2003 Federal Signal Corporation